

EUREKA EXPRESS

MARCH 2012 – Easter Colouring Competition



Happy Easter

EUREKA EXPRESS
EASTER COLOURING COMPETITION

Groups: Pre-schoolers
Juniors 5 - 7 years
Seniors 8 - 10 years
11 years and upward see below

Only one entry per person
Further copies available from Eureka Motors

Please have entries in to Eureka Motors
by 10am Tuesday 3rd April at the latest

Judging will take place and prize-winners will be advised on 4th April

Winners will be named in the April *Eureka Express*

Please colour the entire page
(Crayons, pencils or felts may be used)

NAME:.....

AGE:

CONTACT PHONE NUMBER:

DESIGN A COVER COMPETITION

For School students 11 years and upward

You are invited to design a cover for upcoming editions
of the *Eureka Express*

(theme of your choice but please make your design in black and white only)

Entries please to Eureka Motors by Tuesday 3rd April at the latest

NAME:.....

AGE:

CONTACT PHONE NUMBER:

GUEST EDITORIAL

I have been asked to give some background history on Roach's Nurseries.

My farther's farther Tom Roach started the nursery on Tramway Rd near Ruakura where he was a grounds man for Ruakura Research Station. The nursery TB Roach was founded in 1924 growing small plants and trees. In those days there were no tractors only horse and plough.

Tom had 8 children, 2 daughters and 6 sons. Three of his sons when leaving school started Roach's Panel Works on the corner of Angelsea St and Collingwood St and the other three worked in the nursery, which included my dad Lon. Although when Dad left school his dad thought he should follow the other 3 boys into the Panel works so for abit of experience he was sent to the local garage to pour petrol. The first car he filled was a Model T but not really knowing a lot about cars the petrol was put into the radiator and of course that was the end of the job so it was back to the nursery to work with his other 2 brothers.

Years on Tom retired and the sons took over forming TB Roach and Sons and this is when they starting growing roses. And their first purchase was an early model Ferguson tractor.

Dad was sent to war and was based in England where he was a rear gunner in the Air force. This is where he meets and married my mum Thora. After the war was finished Dad came home and continued working in the Nursery. Mum followed shortly after. They had 8 children; I was the eldest and was followed by 7 sisters. Which included 2 sets of twins. Mum did have a third set of twins- girls but unfortunately they were still born.

I left school and worked in the Nursery with dad and his 2 brothers and 6 other staff, were we were growing at that time about 1964 150,000 roses, about 80,000 fruit trees which were all mostly sold bare rooted. We also grew a lot of hedging plants for State Housing which included Phebalium, Escallonia, Abelia and Lonceria.

Dad retired as did his 2 brothers and I took over in about 1979. I purchases land on the corner of Woodside Rd and Morrinsville Rd about 38 acres. There I continual on growing bare rooted roses and fruit trees supplying mainly Garden Centres and Chain Stores and also started gate sales. This was also the time we started potting up roses mainly for the Christmas market to sell in flower.

From there we moved to Newell Rd in Tamahere where we had 15 acres and as that area grew with housing we were forced to look for more land so that was sold and we bought in Schollum Rd in 2005.

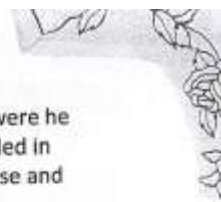
Rose plants are a two year crop so we have two crops in the ground at one time. We ran out of growing land on Schollum Rd so we lease land from Kerry Clarkin. Rose sales have declined over the years, we now grow around 55,000 roses and a few fruit trees. Our staff now is only 1 full time person and a part time person and then we employ up to 4 extra staff for harvesting in the winter.

As the rose season is from June to December we grow fresh veggies which included tomatoes, cucumbers, courgettes potatoes and chillies and gherkins to sell at Farmers Markets and also the Tamahere and Morrinsville Market and also we do gate sales.

Sadly when I retire this will be the end of an era has I have 3 grown up daughters and Judi has 2 daughters of which none of them are interest in horticulture. So if you need any gardening advice or rose plants or even fresh veggies please call in.

Look forward to seeing you in the future

Mike and Judi Roach



SNIPPETS

ENGAGEMENT CONGRATULATIONS to **Levarna Wolland and Andrew Steffert of Hunter Road** who became engaged at Christmas time. Best wishes as you plan your wedding and a bright future together.

WELCOME TO EUREKA to Anthony and Becky Walton who are the new owners of the broiler chicken unit on Morrinsville Road (ex Voorends). Anthony and Becky have three children. Emma is currently at Berkley Intermediate and Luka and Liam at Tauwhare School. The family hails most recently from Reefton in the South Island where they owned and operated a dairy farm in the Grey Valley. A warm welcome to you all.

* Lawrence and Ellie Voorend are now living in Morrinsville.

FAREWELL TO EUREKA to **Jason and Jan McCarthy and children Lachlann and Shavaun**, of Eureka Road who have sold their home in order to relocate to work in Wellington. Our good wishes go with you all.

From the Eureka Hall Committee - A date for your calendars and diaries.
- Eureka Community Pot Luck Dinner, Saturday 5th May 2012 at Eureka Hall at 6:30pm

Further details will be printed in the April *Eureka Express*



RAINFALL

	February 2012	Year to 29 th February
Total (mm)	54	154
Average (1994-2012)	68	158
Difference	-14	-4



Rainfall recorded on 12 days.

EUREKA EXPRESS

ADVERTISING RATES		CONTACTS - Gail or Gayle	
Classified Advertisements	Free	Gail Mayall (Editor)	Gayle Orr (Treasurer)
Small Business Advertisements	\$10 / month	70 Eureka Road	1139 SH26
• x 10 insertions	\$80 / year	Ph 8241 758	R D 6, HAMILTON 3286
One Third Page Advertisement	\$15 / month	Fax 8241 028	Ph 8241 713
• x 10 insertions	\$120 / year	e-mail:	Fax -
One Half Page Advertisement	\$20 / month	editor@eurekaexpress.co.nz	e-mail: gorr@extra.co.nz
• x 10 insertions	\$160 / year	gailandbarry@silnashot.co.nz	



GARAGE SALE AND CAR BOOT SALE

Saturday 31st March 2012

EUREKA HALL

7.30am to 10.30 am

Space Available



Book your table or car boot space asap
\$10 per table (provided) or car boot.

This is all you pay, any money you make selling your items is yours.
This is your opportunity to sell anything, bric a brac, clothing, toys etc
or crafts, produce, preserves etc etc.

The event will be advertised in local papers.
Set up time for tables will be Friday night, Car boots 6.30am

Start collecting your goods.
To book, or find out more from the Eureka Express Committee phone
Gayle Orr 8241713
Or Gail Mayall 8241758

Come along for a fun morning, Sausage sizzle, coffee and cakes available.

IN YOUR GARDEN



Our garden's summer growth is now over and it's time to prepare the plants for winter survival. You can leave your roses to their own devices now so that they stop taking up the soil's nitrogen and will pick up on the potash in order to harden off their canes ready for the cold winter ahead. You should stop dead-heading now unless you want them for picking.

Alstroemeria heads should be cut now so that the growth will slow down, however, they will continue to make small growths in order to protect the crowns from frosts.

Perennials that have finished flowering are to be cut back; if they are frost tender leave some of the cut-off growth on top of the plant for protection.

Cut approximately 15-25cm off Day Lilies, this not only tidies up the plant but also often generates another round of flowers. Apply slug bait after cutting back as it is an easy time to get rid of these critters.

Agapanthus heads should really be cut off and disposed of or you will be facing hundreds of baby ones in the spring.

Trees that have grown excessively can be cut back. Remember to cut down to live growth or close to the trunk or branch so that no borer can attack what you have cut away. No, do not paste the cut surface as this area is best left to the tree's own devices. If you must paste the area then use soil, as chemicals of any sort are no longer advisable.

Pumpkins are nearly ready for picking, leave a stem on them as they seem to store longer and be sure to put them in a dry area.

It's time to get those winter vegetables in the ground now and plant mustard or lupin in the unused area of your veggie garden.

Remember April is bulb planting month, so it is wise to prepare the ground now.

I am sure that's plenty to keep you busy, happy clean-up time



Pukeko Preschool, Tauwhare

"Quality early childhood education for 2-5 year olds in a caring rural environment"

Pukeko Preschool enjoyed a fun-filled trip to Candyland, where we learned how chocolate is turned into Easter shapes such as chickens and eggs, and how to make candy – we were very interested to discover the pink colouring in the lollipops is beetroot juice! All the children (and the adults who accompanied them!) had the chance to make their own lollipop to take home and show their families.

Our focus on things relating to summer has continued into '5 plus a day – eat your colours' - we have talked about "Growing a Rainbow" with a beautiful mural and lots of colourful artwork from the children. We have planted 'coleslaw vegetables' in our vege garden too, and the children have enjoyed getting into the kitchen to make vege muffins and carrot cake.

We welcome new enrolments to the centre, please call in, email us on pukekopreschool@xtra.co.nz or phone 07-8240860 for more information.

AGM REPORT

The 32nd Annual General Meeting of the *Eureka Express* was held on 13th March at the Eureka Hall. Nine residents attended the meeting which was chaired by Editor Gail Mayall.

Income for the 2011 Financial year was \$3,691.85; expenditure \$1960.49 – a profit of \$1,731.36. Bank balances at the end of the financial year were – Encore account \$1,163.98, Savings account \$6,218.46.

Kathryn Schicker was welcomed back to the committee and a new member Leanne Hilder joined the team. With regret the resignation of Sue Edmonds was accepted – Sue will continue to report back from the Community Committee and contribute to the *Express*.

The Editor outlined the various events organized by the *Eureka Express* team in 2011 including the very successful Country Fair and Giant Pumpkin Weigh-in held on 26 March 2011.

Guest Editorials have become a real feature enjoyed by all – thank you to those who contributed.

Gail also thanked - the Committee for their support, the Auditor Sheryll Gordon, advertisers, regular contributors and those who deliver the *Express* each month. The Committee is also grateful for the many donations they receive from past and present residents of Eureka.

Election of Officers:

- Editor – Gail Mayall
- Assistant Publisher – Wendy Morch
- Minutes Secretary – Jill McGuire
- Club Secretary – Lin Buckley
- Treasurer – Gayle Orr
- Gardening Guru – Jennifer Mace
- Website – Wendy Morch
- Typists – Margaret Smith and Jill McGuire
- Committee / News / Collating: Becky Walling, Anna Drever, Dinah Booth, Doreen Appleton, Michelle Arundel, Lorraine Morrison



The Committee are also delighted that Colin Duncan has agreed to become the *Eureka Express* Patron.

Tauwhare School

PO Box 100, Hamilton 3207 New Zealand
Phone: 07 552 0000 Fax: 07 552 0001
www.tauwhare.school.nz



Roll: 136

BOARD OF TRUSTEES

We farewelled two of our long standing Board members at assembly this morning. Marc Vink, whose children Matthew, Brandon and Katrina attended Tauwhare School, was co-opted onto the Board in November 2004 and took on the roles of Property and Chairperson. Fiona Rhodes, whose children Isla and Faye attended Tauwhare School, was co-opted on in November 2006, and Fiona took on the role as Secretary. We presented both Fiona and Marc with a gift and thanked them so much for their wonderful commitment to Tauwhare School.

David Evans has accepted the role of Chairperson, and hopefully we will keep David for many years also!!

OLIVER

All of our children who auditioned got into the Hamilton Operatic Society's Oliver. Well Done!! Congratulations to one of our Dads, Gary Snape, who is playing the part of Mr Brownlow, and I will be playing Widow Corney. Obviously Gary and I will need a lot of make up to play these older characters!! Oliver is starring Richard O'Brien who wrote the Rocky Horror Show and is on from June 23rd to July 7th.

PMP PROGRAMME

Please!!!!!! We really need helpers for our PMP programme which starts now.

PMP is a valuable programme which works on balance, finer motor skills and cross body work, in the

junior school, and can have a direct impact on children's reading and writing. The children think they

are doing P.E. and really love it. Last week's newsletter mistakenly noted that PMP was from 1.15pm

to 3.50pm - it actually finishes at 2.50pm (when school ends). If you can spare 1 afternoon each

week on a Monday, Tuesday or Thursday from 1.15pm to 2.50pm to help, we would be very grateful.

You would be required to work with a small group

four adults at each session for the programme to work as it has been designed to. Please email kirsty.gilroy@tauwhare.school.nz or ring the office if you can help.

Sports/P.E

We have had a very full Phys Ed programme this term. The children have had the chance to work with a tennis coach, Janine Broekhuizen has continued her swimming lessons and Project Energise has worked with the children on athletics skills. Our results have been impressive.

COUNTRY SCHOOLS CRICKET TOURNAMENT

A great day was had by the team and parents at the Country Schools Cricket tournament held at the university grounds. Tauwhare school did themselves proud by coming third out of ten schools, which was a huge achievement considering the team was new and there was plenty of competition.

The team came out firing in their batting with all players contributing to an impressive run total. Their fielding was just as impressive with at least 5 catches taken in the field. A great win and one the kids were very proud of.

The children were all well behaved and represented the school proudly both in presentation and professionalism on and off the field. *David Evans*

HILLCREST SWIMMING SPORTS:

On Thursday 15th March Tauwhare sent their strongest team to the City and Country Cluster Swimming Sports. We had a fabulous day with so many making the finals.

TENNIS WINNERS:

A big congratulations to our tennis team of Dylan Meek, Georgia Hill, Mandi Portegys and Liam Fredericks who won at the Cambridge Inter-Schools Mini Tennis Competition.

On Friday the four of them represented Tauwhare School at the Cambridge and won the orange grade. This was the first time we have sent a team so I am looking forward to sending three teams next year after another year of Grass Hopper Tennis. Thanks to Lisa Meek for taking the team.



**It's
back!!!**

The Tauwhare School PTA QUIZ NIGHT

Q1: When is it?

Answer: Saturday May 19th 7.30pm

Q2: Where is it?

Answer: Eureka Hall. Corner Hunter Road and SH26

Q3: How much is it?

Answer: \$160 per team/table - Up to 8 members per team.

(We may be able to join you up with other groups to make teams of 8 if you'd prefer)

SUPPER AND 1X COMPLIMENTARY DRINK PER PERSON SUPPLIED

Q4: How do we pay for drinks etc on the night?

Answer: Cash Only (Sorry, no eftpos)

Q5: What's on offer?

Answer: A night of fun, hilarity and an opportunity to test your general knowledge!! Also a Cash only bar, spot prizes and quick fire raffles.

There will be prizes for Winning Team, Best Dressed Team and Best Decorated Table.

All proceeds go towards the New School Pool.



**So where will you be on May 19th?
At the Tauwhare School PTA Quiz Night! - Where else!**

REMEMBER - CASH ONLY!

Register your names and pay entry fee by Tuesday 1st May. Send to Tauwhare School PTA, 36 Scotsman Valley Road, R D 7, Hamilton or email Jane Kay on nzsap.animal@extra.co.nz



Name(s)

Team Name if entering team:

Contact Phone number or email:



TAUWHARE INDOOR BOWLS

People sometimes ask "who can play bowls?" The answer is simple - children, parents, grandparents, aunts and uncles, cousins, friends and workmates. Anybody can play this wonderful game. Men and women of all ages play Indoor Bowls. Indoor bowls is truly a "game for all".

The Tauwhare Club meets Thursday evening at 7:30pm at the Tauwhare Hall. Visitors and new members are always welcome.

Our Match Committee for the 2012 season is:

- Neville Woodcock Ph. 824 0817
- Reg Coxon Ph. 827 8911
- Jim Bargh Ph. 824 1100
- Lochie Verner Ph. 824 0716
- Kevin Williams Ph. 824 0728

We sincerely thank our sponsors for their continuing support -

- The Woolshed Homestay - John and Sandra Cottle Ph. 824 0992
- Ian Manning Registered Drainlayer Ph. 824 1988
- Eureka Motors - Colin Duncan Ph. 824 0773
- Tauwhare Home Kills - Trevor and Leonie Brunton Ph. 824 0880
- Spyves Panel Shop - Ron and Karen Spyve Ph. 824 1890
- Billings Builders Ltd - Ivan Billings Ph. 824 1832

To Kevin and Helen Williams and family we offer our deepest sympathy for the loss of Helen's Mum, Beryl Walters. Beryl was a member of the Tauwhare Club for approximately 15 seasons. After retiring from playing the game Beryl maintained her interest in the club and came along on many Thursday evenings to support us. We will all miss Beryl's company.

The official opening night for the 2012 season was held on 15th March. Visitors from Matangi, and Tauwhare members, enjoyed the night and played Progressive Bowls. Thank you to Ivan for donating a new set of laminated progressive cards. They will be more durable than the old card type. Also thank you Ivan for organising, compiling and printing our 2012 programme.

Results:

1 March 2012 - Introduction Night No. 1

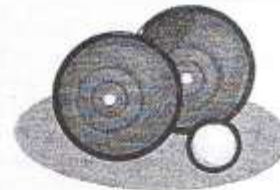
- Winners R Coxon, K Williams, M Bargh
- Runners Up J Hooper, B McNally

8 March 2012 - Introduction Night No 2

- Winners Andrew McNally, L Verner, M Bargh
- Runners Up I Billings, K Williams, G McNally

15 March 2012 - Opening Night

- Winners
 - Skips I Spencer Threes M Hintz
 - Twos L Verner Leads D Miller



Upcoming Events:

- **Tuesday 3rd April** School children visit (1:00pm)
- **Thursday 5th April** Family night
- **12th April** Skips + 3's and Leads and Twos - Trophy Night
- **19th April** Open Tournament Triples (**Plate please**)
- **26th April** Club Night and Burnside Trophy vs Matangi (**Plate please**)
- **3rd May** Rinks Championship (Prior entry)

Robin Bargh - Phone 824 1819

LADIES A PLATE

Good and Goey Easter Baking



Chocolate bread and butter pudding

6 chocolate hot cross buns
30g unsalted butter softened
120 g dark chocolate, chopped
1 cup cream plus extra 2 serve
1 tsp vanilla extract

Grated rind of 1 orange
1 cup milk
½ cup castor sugar
icing sugar for dusting

Preheat oven to 180c Split hot cross buns in half horizontally and each half. Place bases in a 8 cup capacity baking dish, buttered sides up scatter with orange rind, then replace bun tops.

Heat chocolate, milk and cream in a saucepan on medium, stirring until chocolate melts, then remove pan from heat

Whisk eggs, castor sugar and vanilla until combined Stir in chocolate mixture, then pour over hot cross buns and stand for 10 minutes.

Bake for 35 minutes until set then leave to stand for 5mins.

Dust pudding with icing sugar and serve with extra cream.

Soft- centered chocolate Easter cakes

125g dark chocolate, chopped
150g unsalted butter, chopped
3 eggs
½ cup firmly packed brown sugar
½ cup plain flour, sifted

1/3 cup self-raising flour, sifted
1 Tbsp cocoa, sifted, plus extra for dusting
6 small caramel-filled Easter eggs

Preheat oven to 200C. Grease 6 x ½ cup capacity oven proof dishes or pudding moulds. Place chocolate and butter in a saucepan on low heat. Cook, stirring, for 2-3 minutes, until smooth. Cool for 10 minutes.

Beat eggs and sugar for 4-5 minutes until light and fluffy. Transfer mixture to a large bowl. Fold in flours, cocoa and chocolate mixture. Spoon mixture into moulds, filling to 1cm below rims.

Press an Easter egg into the centre of each. Bake to 12-14 minutes, until firm around edges (cakes will still be soft in the center). Invert cakes onto serving plates. Dust with cocoa and serve





BANANAS



Bananas are one of the most nourishing tropical fruits which contains many important anti-ageing nutrients and also contains “**moderate releasing**” sugars that provide an energy boost.

Bananas contain high levels of **B-vitamins** which the body needs to produce energy. These include vitamin **B5**, which aids the formation of the immune system’s killer cells and **B6** which improves the body’s ability to clear away waste matter. Bananas are also a good source of immunity-enhancing **vitamin C** and contains **manganese**, which works with this vitamin to produce the virus-fighting substance **interferon**, in addition, they are dense in **fibre** and **potassium** which regulates body fluids and nerve function and also keeps high blood pressure in check and reduces the risk of heart disease.



They also contain **Potassium** which works with sodium to maintain the fluid and electrolyte balance in body cells, so bananas help to maintain healthy nerve and muscle function. They have **FOS (fructooligosaccharides)** to help to feed “good” bacteria in the gut and aid digestion. They also contain **tryptophan** which the body converts to serotonin to aid peaceful sleep.

NUTRIENTS: vitamins **B3, B5, B6, vitamin C, biotin, potassium, fibre, magnesium, manganese.**

BANANA SMOOTHIE: Apple juice, banana, blueberries, strawberries, yoghurt or soya milk— Blend well, this is very enjoyable, I also add Spirulina.

BANANA HAIR CONDITIONER: 1 ripe banana, 2 tsp grapeseed oil. Mash banana, add oil to make paste. Massage into hair and scalp, cover with cling film for 30min, wash out with mild shampoo.

CHERYL MCFARLANE



New Zealand
POLICE
Nga Pirihimana O Aotearoa



16 February 2012

REQUESTS BY STRANGERS

Neighbourhood Support groups and members of the public advise that they have been approached recently at home and while shopping by strangers who claim to have problems.

They usually tell some "hard luck" story to try to get sympathy from the intended victim.

These individuals seek money, assistance with transport etc.

Take note of the stranger's appearance and vehicle registration number and contact the Police as soon as possible on

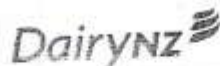
07-858-6200.

Under no circumstances should you invite the stranger into your house or car; or give them money.

Regards

Sergeant Paul Francis

East Hamilton Community Policing Centre



DairyNZ Farmers Forum

Mystery Creek Events Centre will again be host to the biannual DairyNZ Dairy Farmers Forum from May 23rd to 24th. Mark it in your diary now and join the other 800 – 1,000 people expected to attend. There is no cost to levy paying farmers and their staff but \$150 for the 2 days for others. You need to register by calling 0800dairynz or go to www.dairynz.co.nz

Discussion Group at the Gordons

We had a big turnout at Brett & Rachel Gordon's farm when they hosted the Eureka discussion group on March 13th. At one point I counted 38 people from farmers through to Bankers. The BNZ put on a nice BBQ and drinks to finish with which was appreciated by everyone.

Brett & Rachel were good enough to put their business financials into DairyBase for their 3 leased farms. This made for a very interesting and insightful look at the operation. They do a few things different than most. No I'm not talking about the amount of fishing that gets done over summer. An example would be calving 3 weeks earlier than Waikato average.

By analysing the accounts through DairyBase we were able to see they were very close to the top 20% for operating profit. This is across all of NZ and across all farm systems. This was achieved with above average production per cow (385 Kg MS/cow) and per hectare (1,090 Kg Ms/ha) but most importantly much lower than average Farm Working Expenses/Kg MS (\$3:15/Kg MS). This compares with a Waikato Owner Operator average of around \$3:70/kg MS for last season.

The DairyBase data, for hundreds of farms, tells us that while production KPI's are important the single most important factor affecting a dairy farms profitability is good cost control, i.e. low Operating Expenses per Kg of MS.

Mark & Measure

If you want to learn more about profitable dairy farms, growing your wealth and understanding DairyBase reports etc you should attend Mark & Measure Business in Taupo in mid May.

The other Mark & Measure course is Mark & Measure Strategy. This course helps couples work out a plan for their future, both personal and business. Couples that want to go places in dairying are strongly encouraged to register for one or both of these courses. That's because 80% of the progress you will make in your career are from strategic thinking as opposed to 20% from actually doing the work. i.e. on the business rather than in the business. More details available from me or the DairyNZ website www.dairynz.co.nz

Listen Up:

I know everyone likes a bit of gossip so here we go. I'm pleased to announce that I've just got engaged!! Chris and I both lost spouses to cancer a few years back. We plan to get married sometime in late June/early July and then head to Europe where I have a daughter working in Sweden.

Fishing Trip

No doubt Brett Gordon will write about the up-coming Discussion Group fishing trip to the Coromandel muscle farms. Date is Monday April 23rd. Contact Brett on 8241108 or 027 4484722. The cost is \$50. Limited to 20 people.

Phil Irvine
Senior Consulting Officer
DairyNZ





Newstead Veterinary Services

161 Morrinsville Rd
RD4 Hamilton
Phone (07) 856-4522
Fax (07) 8569487



FLEAS AND WHAT TO DO ABOUT THEM

Fleas are the most common parasite in cats and dogs. Every animal is likely to be infested with them at some stage in their life.

Why are Fleas so difficult to eliminate?

Fleas are small, red-brown insects with complex life cycles, most of which takes place away from your pet. Only the adult flea lives on your pet. They drink its blood and reproduce, and then they die. The eggs fall off into the environment, ie, carpet, bedding and cracks in the floor.

The eggs hatch into maggot-like larvae feeding on dust and the droppings of adult fleas, which consist mainly of undigested blood. For every flea you find on your pet there are at least 200 eggs developing in the environment.

The larva develops into an adult flea, and then it waits for your pet to pass by when it will jump on and feed. They are not fussy and will jump on any warm-blooded animal that passes, even us!

In hot and humid weather, just as we are experiencing now, the life cycle of the flea is as short as two and a half weeks. This is the time from when an egg is laid to when that egg reaches adulthood and is able to reproduce. However, if you have central heating, this life cycle will continue all year round in your house, although at a slower rate than in summer.

It is now possible to prevent fleas from becoming a problem in your household.

How do flea's damage my pet's health?

• Skin Diseases

Fleas are the commonest cause of skin disease in your pet, especially cats. When the flea bites it injects some of its saliva into the skin. This saliva contains chemicals to stop the blood from clotting until the flea has finished feeding. These chemicals may cause an allergic reaction in your pet, known as Flea Allergic Dermatitis (FAD). Most pets are not affected, but some suffer from severe itching.

Itchiness in your pet will show in many different ways. Your pet may chew, lick or rub the affected area. Cats have a very rough tongue. If they groom an itchy area excessively there is fur loss as the hair follicles are broken, seen especially over the flanks and belly and tends to be symmetrical. In severe cases the skin becomes very sore and raw, and can get infected. In some cats a scabby rash will develop around the neck, head and base of tail. This is known as "miliary dermatitis". It can be caused by a number of factors, e.g. hypersensitivity to food, atopy (a skin condition), but is most commonly seen with FAD.

Some cats may also develop ulcers on the body or mouth, known as the 'eosinophilic granuloma complex'.





- **Fleas and Tapeworms**

It is common to have a tape worm infestation at the same time as having a flea burden. This is because part of the life cycle of the tapeworm involves the flea. The young tapeworm lives inside the flea. The flea is then swallowed when the animal grooms and the young tapeworm develops into an adult worm when it reaches the intestines of your pet. It can lead to weight loss and a poor coat.

How can I tell if my pet has fleas?

If there is a large infestation then the adult fleas can be seen with the naked eye. Eggs can not be easily seen but the flea dirt (undigested blood) will be easily seen. Flea dirt is a black gritty material that turns damp cotton wool red/brown when placed on to it. Dust and earth will not colour the cotton wool.

Absence of fleas and flea dirt does not exclude the diagnosis. Cats are frequent and proficient groomers so evidence of fleas might be rapidly removed.

What if I have a number of pets?

All the cats and dogs in the household should be treated even if only one animal appears to be affected by a flea allergy. If one pet has fleas, then you can safely assume that all the pets will have fleas.

Long-term control is a significant cost especially in multi-animal households.

If your pet develops a flea-related skin condition then the prognosis is good as long as there is rigorous flea control. This may required more frequent application of the flea control treatments, which your vet can advise you about. In serious cases you pet might need medication to stop itching. You would expect your pet's hair to re-grow over 4-6 weeks once correct flea control is started.

Successful Treatment

The secret of successful flea control is to treat both the pet and the environment with effective products. Not all products are equally effective and those available from the vet are usually much better than those sold in pet shops and supermarkets.

Reasons for treatment failure

Fleas will still be seen for a few weeks after the start of strict flea control. This is because the eggs and larvae that have made it into your carpet already will still develop and hatch out as adults. However, when flea control is in place they come into contact with your pet then quickly die off.

You must treat all in contact animals, as they will harbor a flea population that will jump onto your pet and cause allergies. This can be difficult with cats that visit a number of households.

Options for Flea Control

Flea powders and flea shampoos tend to be ineffective against most flea problems. Flea collars again can be ineffective unless your environment has only a small flea population.

The spot on preparations, such as Frontline Plus, Advantage and Revolution are all safe for use in your pet but are deadly to fleas.

Please contact us if you have any queries regarding treatment of fleas in your pet.



NEWS FROM YOUR WAIKATO DISTRICT COUNCILLOR

You should have received your voting papers for the Maaori Representation Poll. ** Every local authority has had to consider Maori representation. After due consideration, and after being asked by Tainui to look seriously at the option, Waikato District Council chose to have a poll. However the Regional Council has decided within Council to have two Maori seats.

** *Waikato District Council indicates a long vowel sound in written te reo Maaori by using double vowels, for example "Maaori". Double vowels is the preferred standard used by Waikato-Tainui, the iwi authority in the Waikato District and the council has adopted double vowels to acknowledge the iwi preference.*

Local authorities are required to review their representation at least every six years. Under the Local Government Act council is required to determine by 31 August 2012, for public consultation, the proposed number of wards, the proposed name of the proposed boundaries of each ward and the number of members proposed to be elected by the electors of each ward. Due to the amalgamation of Franklin and Waikato Councils we had to do this review at the beginning of this term and, because the six year period falls before the 2013 elections, we have had to undertake the review again - twice in the last three years. We did apply to the Local Body Commission for a dispensation but our request was declined.

There seem to be one or two questions regarding the information paper that has come out re Maaori representation within Waikato District.

Council will retain the existing Ward system for the 2013 local body elections. If the Waikato District residents vote for Maaori seats we will overlay two Maaori Wards over the existing wards - then in 2013 those on the Maori Roll will vote for two Maaori candidates for the Maaori wards and those on the general roll will vote for Councillors in the existing wards. i.e. those of you on the general roll will vote for a Eureka Ward candidate. The result of the poll will be binding on the council for at least the next two elections (2013 and 2016). If electors vote for Maaori seats we will reduce the number of ward councillors by two to cater for the two Maaori seats. There would also have to be some boundary adjustments of the existing wards. The total voting population of Waikato is 64,250 - 11,750 Maaori election population; 52,500 general election population. Please vote before the poll closes on 4th April. Please phone me if you have further questions.

You may be aware that a new Broadband tower has been built in Eureka - two others are fully operational - in Puketaha and Matangi (sited on the roof of the old factory). Our family have connected to the Puketaha tower and the speed of internet connection has vastly improved. It is a wireless connection with one small box under the desk - our PC and laptop automatically connect to it when we turn on a computer and we can move the laptop anywhere in the house and connect. Far better than having to switch wires all the time between computers. We don't get the weather outages we had with the satellite wireless connection either. So if you wish to explore connection options phone your preferred provider and get a quote. A rural provider is *Farmside* and they will come to your home and set up your computers on to the system. Last month I attended the function to celebrate the completion of the first tower under the Vodafone contract - the Eureka tower. The Minister of Communications, Amy Adams, attended the rollout.

In the last six weeks we have spent considerable time on the 10 year Long Term Council Community Plan (LTCCP) which we review every three years. We have had to trim the plan very hard. Some of the projects we have trimmed out, that were priorities in parts of my Ward, include footpathing and community toilets. We have even had to trim up the roading budget. We will struggle to maintain our roads to the normal high standard which I am not happy about. Hopefully Waikato District will achieve considerable growth in coming years to increase the rating base so we can maintain a good standard of services. Unlike other Councils, Waikato District has a very low level of debt and we don't want to change this. A summary of the LTCCP will be mailed individually to each resident in the District arriving in your mailbox between 1st and 5th of April. I think the council staff have provided an excellent and clear summary this time round. Please study the information and give us your feedback.

The first block of residential subdivision in Pokeno is going on the market. There is considerable interest in the project and I hope it moves along well. The sections are the first of approximately 95 new residential sections in the township. There is also keen interest in the light industrial land which will greatly assist employment in the area. You will note in the LTCCP information booklet that we are supporting an extension to the commuter rail system from Pukekohe to Tuakau to enable residents to reside in Waikato and commute to Auckland or vice versa. In the future we hope the service will be extended to Pokeno. However at this stage we did not support the commuter rail system from Hamilton to Auckland because of funding concerns and cost.

Rob McGuire
Councillor Eureka Ward

Ph. 824 3696 / fax 824 3645 /
Mob. 0274 970 966 / email robmcguire@xtra.co.nz



THE BEAUTY HOUSE

Personalised, friendly service

ITS WEDDING SEASON

Book now for:

- Lovely natural Spray Tans ONLY \$30 (Full Body)!
- Manicures/Pedicures ONLY \$30 (includes free Orly Polish & File)!
- GORGEOUS affordable Mineral Cosmetics!
- Glycolic Peels – a great way to get your skin glowing before your big day ONLY \$40
- Lash/Brow Tints & Brow Shaping ONLY \$50!
- Half leg wax ONLY \$25! Underarm wax ONLY \$15!

GIFT VOUCHERS (Eft-pos available)

dermatech

Bella Vita
PURE MINERAL COSMETICS

Oasis beauty

Tauwhare Village, 10926 Tauwhare Road

Ph: Jacqueline 8240950 or 0274 853985 Email: thebeautyhouse@xtra.co.nz



Find us on
Facebook

The Beauty House



**** NOW IN EUREKA ****

Plus MORRINSVILLE & HAMILTON

2011 CLASS TIMETABLE

MON	7.30 - 8.30pm	EUREKA - Eureka Hall, 5H26,
TUES	7.30-8.30pm	HAMILTON - St Peters Hall, 51 Victoria St, CBD
WED	6.00-7.00pm	MORRINSVILLE – Senior Citizen Hall, Canada St
WED	7.30 - 8.30pm	
FRI	6.00 - 7.00pm	MORRINSVILLE - Methodist Church, Thames St

PRICES

Casual Class	\$10
Student / Pension	\$6
Concession Cards:-	
(For 10 Classes)	\$70 (3 months)
(For 20 Classes)	\$120 (6 months)
Family Pass	\$20
2 x Adults & 2 x Children (under 14 yrs)	

FIRST TIME TO CLASS ONLY \$4

Join Zumba Instructors - Megan Hyland, Sarah Rasmussen, Marcia Davie

Ph: 021 905335 (Megan) 027 3871333 (Sarah) Email: megan.zumba@xtra.co.nz

belles & brides

Belles & Brides is the Waikato's most comprehensive mobile beauty service. We offer an amazing range of beauty services including professional hair and makeup and a full range of pampering beauty therapy services.

Weddings, At-Home Pamper Parties, and School Balls/Special Occasions, are our specialities!

Going away on Holiday? Awesome summer special now on! Purchase one full body spray tan and get the 2nd one half price!

Want that instant, bronzed sun-kissed glow without the harsh rays? Well... now is your chance! Get together with a friend and get that gorgeous, healthy, summer tan applied at the same appointment! Get in quick though as appointments slots will fill up fast! And remember we use the fantastic 100% Kiwi 'Spray Tanz' tanning solution – which is 100% organic, and gives a natural, flawless result!

Jump onto our website to see our full range of services or call or email us to book!

Eureka Precast Concrete

117 Hooper Road

**Manufacturer of the following
Farm and Small Block Concrete Products**

Palm Kernel Feeding Troughs

Feeding Pad Troughs

1,000 Litre Oblong Water Troughs

200 Litre Round Water Troughs

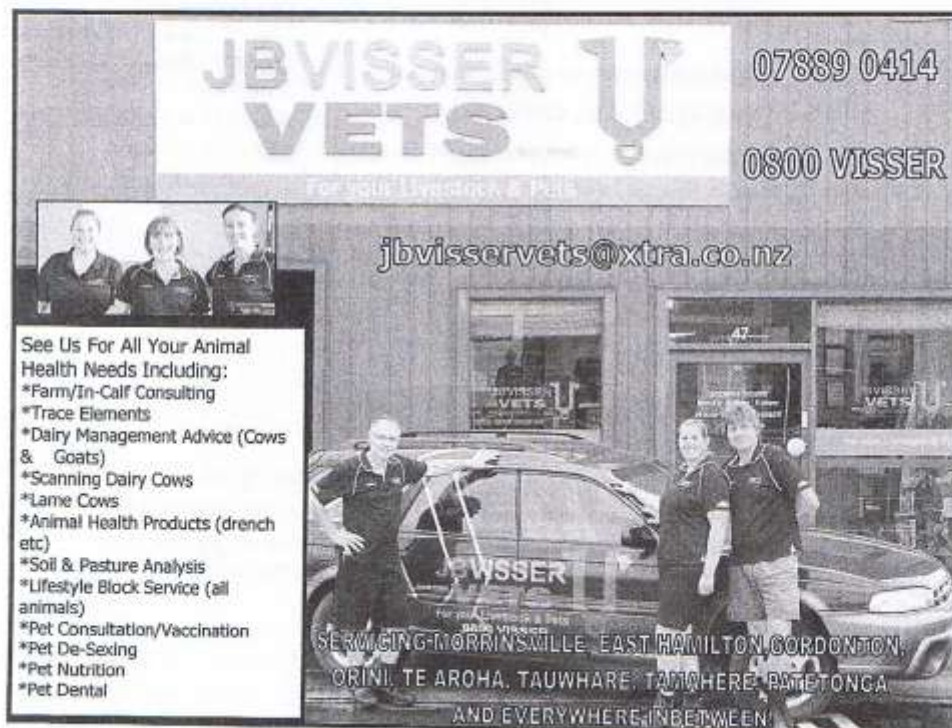
Offal Hole Lids


Septic Tank Replacement Lids

Plus Much More

Ph. Ian Manning – 0274 961902

824 1988 a.h.



JBVISSE VETS 

07889 0414
0800 VISSER

jbvissevets@xtra.co.nz

See Us For All Your Animal Health Needs Including:

- *Farm/In-Calf Consulting
- *Trace Elements
- *Dairy Management Advice (Cows & Goats)
- *Scanning Dairy Cows
- *Lame Cows
- *Animal Health Products (drench etc)
- *Soil & Pasture Analysis
- *Lifestyle Block Service (all animals)
- *Pet Consultation/Vaccination
- *Pet De-Sexing
- *Pet Nutrition
- *Pet Dental

SERVICING MORRINSVILLE, EAST HAMILTON, CORDONTON, ORINI, TE AROHA, TAUWHARE, TAIWHARE, RANGITONGA AND EVERYWHERE IN BETWEEN



870 SH 26 Newstead
 Brent 0272 432 011
 mcfarlanes@farmside.co.nz

Ph 824 1186
 Brent 0272 432 011

- Hay / Haylage—round, square, conventional
- Grass & Maize Silage
- Full ground cultivation
- Maize and Crop Planting
- Land lease & Share Cropping
- Spraying
- Truck & Trailer Hire
- Digger
- Metal injected sub-soil irrigation



"Helping farmers feed their cows"



Ctas NZ Ltd

www.ctas.co.nz



Specialists in:

- Professional systems online and PC development
- Online internet based and PC/Lan Systems development
- Business Websites – FREE development (conditions apply)
 Check out <http://ctas.co.nz/Webs/Home.aspx> to see more.
- Alert-Me - Online TXT and Email reminder system. Ideal for everything, from birthdays, appointments, sporting, gardening, TAX, WOF, Registration and many more. One off or recurring. Free for home use. Go to www.Alert-Me.co.nz
- YouTXT – Operate your own TXT shortcode using our TXT system for free. Go to www.youtxt.co.nz
- FlightCheck – Check your Flight details, real time from your Mobile Phone. TXT Flight number to 8808. Txt's cost 50c

Phone: 07 824 1025
Email: grant@ctas.co.nz








Newstead Veterinary Services
 161 Morrinsville Rd (SH26)
 Phone (07) 856-4522 Fax (07) 8569487
 email: admin@newsteadvets.co.nz
www.newsteadvets.co.nz

We offer a comprehensive range of services for dogs, cats and small pets.

- Puppy pre-school classes
- Comprehensive range of pet care products and pet food
- Nutritional advice with onsite pet dietician and free weight clinic
- Cremation with a local pet crematorium, with optional return of ashes
- Isolation ward
- NZVA Microchipping Accredited Practice
- MAF Accredited vets for pet export certificates to Australia
- Ample parking

We believe that pets are important members of your family.

SPYVES PANEL SHOP
for all
Panel and paint requirements



**AUTOROBOT CHASSIS
and
ALIGNMENT MACHINE**

Ph Ron or Karen 8241 890
Fax 8241 892
Mob 027 280 0346

ROSS PUMPS

&
Filtration Specialists Ltd



Servicing and installation
On all types of pumps
Full Water Treatment
Service Available

DAREN ROSS

Tel. 8241 726 or 0274 346 571
Fax. 8241 879
Email: rosspumps@xtra.co.nz

COMPUTERISED BULK SPREADERS LTD

For all your spreading needs



FERTILIZER, LIME, UREA

Top Service,
Competitive Rates

Roger Springett
103 Hooper Road Eureka
Ph. 8241 175
Mob. 0274 970 413

EUREKA POULTRY FARM

13 Hooper Road
Ph 824 1762
NIC & MARIA STOLWYK
Hobby Hens



Young pullets from
5 weeks to point-of-lay
Great for lifestylers
Bagged up chook manure
Hours Mon-Sat 8-6

Green Acres

Professional lawn and
Garden care service



Maurice Smith

For free no-obligation quote:
Ph: (07) 824 1948
Mobile: 0274 797 282
Fax: (07) 824 1947
Email: msmith@clear.net.nz
Ride-on mowing specialists
Give your lawn the perfect finish

IAN MANNING
REGISTERED DRAINLAYER



For all drainlaying work
New or alterations
Residential & Commercial
Blocked drains cleared
Maintenance
Prompt service

Tel. 8241 988
Fax. 8241 989
Mob. 0274 961 902

Kelvin Lalich Builders Ltd

- New homes
- Alterations
- Large & Small
Commercial Buildings
- Chicken Sheds

Phone 889 3951 (bus)
889 3975 (a/hrs)



**"Building
with Pride"**

FRESH
APPLES & PEARS
STONEFRUIT IN SEASON



NEWSTEAD ORCHARD
552 Morrinsville Road

OPEN MON-SAT,
W J McMiken & Co
Morrinsville Road
Tel. 856 4478



TAUWHARE HOME KILLS

TREVOR & LEONIE BRUNTON
1126 TAUWHARE ROAD

PH: 07 824 0880
FX: 07 824 0809



Gayle Orr
 Spiritual Counsellor & Teacher
 Working with angels to relay
 Messages from loved ones
 Personal Readings
 Healing
 Spiritual Counselling
 Meditation & Relaxation Classes

**For a personal reading
 phone: 07 824 1713**

**Got A Leak?
 Save \$\$\$**
 Fix it yourself with
**Feb Aquaseal Hyband
 the leak repair kit in a roll**

- Easy to cut, mould and apply
- Instant watertight seal
- Lasting bond
- Wide range of uses

Available from 50mm to 450mm wide
 Stop leaks in roofs, hay barns,
 covered yards, milking sheds, cars,
 trucks and caravans
 Use for patch repairs and for flashings

To find out more..... call Debbie
 Ph 07-8241644 or 027-247 9367

CALF COVERS
 "Canvas, Jute, or satin
 lined for Calf Club"

I also manufacture horse covers, trailer covers or any other kind of cover you may want. Good quality, P.V.C. horse gear bags — can also be used for dive bags. Good quality at reasonable prices.

**Phone Narelle Pollock
 824 0736**



**CAMBRIDGE
 CARPET
 CLEANING**
Servicing the Waikato

Also

- ✓ Upholstery Cleaning and Protection
- ✓ Flood Restoration
- ✓ Stain Treatment
- ✓ Auto and Marine Work
- ✓ Window Cleaning
- ✓ Senior Citizens Rates

**Phone Grant on 0275 542 116
 Or 07 823 7031
 Locally Owned and Operated**

**Local builder
 Tauwhare Road resident
 Registered Tradesman**



Concrete work
 New homes
 Renovations
 Alterations
 Farm buildings
 Decks
 Fences
 Bathrooms
 Kitchens
 Roofing

Over 29 years building experience
 No job too big or too small

Craig Griffin Builders Limited
 Phone Mobile: 027 279 2682
 Phone/Fax After Hours: 824 1607
 Email: craigandjacklegriffin@ihug.co.nz

nzgarden sheds
the best little Sheds around

Your local garden shed supplier of
 NZ made, self assemble Garden Sheds
 (Zincalume or Colour Steel)

GET IN TOUCH...

- * EASY ASSEMBLY
- * MADE TO LAST!

Waikato Shed Company
 218 Hunter Road, Eureka,
 Hamilton
 Phone: 07 824 1045
 Email: sales@nzgardensheds.co.nz

EQUIRE FOR A BROCHURE NOW

**Residential
 Interior Design**

- Colour schemes and advice
- Home organization ideas
- Maximise interior space and use
- Personalise your home



Phone Leanne Hilder
 07 824 1023 or 021 911 621
 Email: leanne.hilder1@gmail.com

Scanlan & Jones

Specialists in:

- ✓ Wood Fire Sales
- ✓ Wood Fire Installation/Repairs
- ✓ Hearth Manufacturers
- ✓ Outdoor Fire Installations
- ✓ Chimney Sweeping
- ✓ Heat Transfer Kits — Sales & Installation

Registered Installers
 Over 17 Years Experience
 Free Quotes



**Contact Justin & Brendon
 0274 834 267 (day)**

A/Hrs: 07 824 0950 Fax 07 824 0951
 Email: scanlan.jones@xtra.co.nz

Member of New Zealand
 Heating Association 

HAIRFIELDS
 HAIR DESIGN
 95 HOOPER ROAD
 Sharon Laurent

Full salon facility in Eureka
 Total hair care professional
 with many years experience
 Agent for Nutrimetics also



Open Tuesday to Friday
 Late nights Tues/Thurs
 Tel. 824 1712 or 027 280 5978



EUREKA MOTORS

COLIN DUNCAN (PROP). SH 26, OPPOSITE EUREKA HALL

**WE ARE EQUIPPED AND SKILLED TO CARRY OUT
ANY REPAIRS NEEDED ON ALL TYPES OF VEHICLES**

Our experienced workshop staff guarantee to provide quality service
to all our customers

If we don't have the right part in stock we'll get it for you straight away
If you need some work done, why not give us a try?

OPEN MONDAY - FRIDAY 7.30am - 6.00pm

SATURDAY 8.00am - Noon

Ph 8241 773 Fax 8241 073

WALLING CONTRACTING LTD **'YOUR PROVEN LOCAL ONE STOP CONTRACTORS'**

WE CAN OFFER YOU THE FOLLOWING SERVICES:



- *Grass Silage
- *Ploughing
- *Rotary Hoeing
- *Ripping
- *Undersowing
- *Baling & Wrapping
- *Digger (12 Ton)
- *Grass Crop Sales

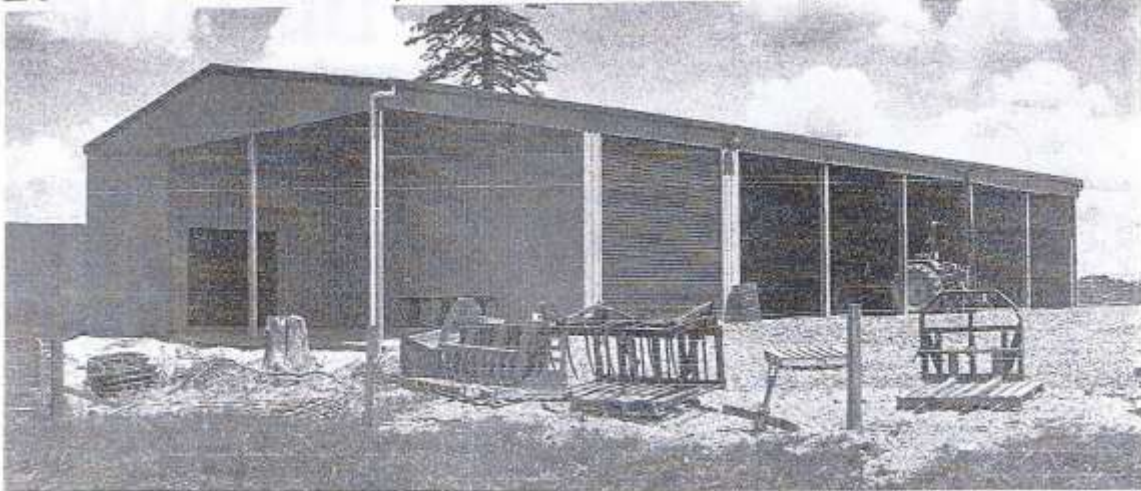
- *Maize Silage
- *Power Harrowing
- *Discing
- *Maize Planting
- *Roller Drilling
- *Power Harrow/Seedbox
- *Shavings & Sawdust
- *Maize Crop Sales



**FOR ALL YOUR CONTRACTING NEEDS
PHONE LEN OR BECKY
ON**

824 0894 (anytime)

LOCAL COMPANY, LOCAL PEOPLE, LOCAL SERVICE



FULL DESIGN & BUILD OR KITSET ONLY OPTIONS



FREE, NO OBLIGATION DESIGN & QUOTE SERVICE

If you need a shed that's built to last from top quality materials you can't go past our sheds. With heavy duty steel framing and Zinalume or Coloursteel cladding you will get the strength and durability that lighter steel and timber framed buildings simply can't compete with.

It's not enough too just have a great building system. You also need professional people with the knowledge & experience to deliver a great shed, done right. Being backed up by an international company means Waikato Shed Company is supported in their delivery of high quality building solutions. The end result is that you can have total confidence in the building design, construction process, & the people you are dealing with. It's the strength of our "chain" that is our advantage.

To discover the benefits of owning a Waikato Shed Company shed visit our website now.



Freephone **0800 555 147**
218 Hunter Road, Eureka
www.waikatosheds.co.nz

WAIKATO SHED
COMPANY ✓
great sheds, done right!
Hamilton • Taupo

BUILT TO LAST THE DISTANCE

Our multi-purpose shed was a challenging build and Waikato Sheds did a first class job of it. Their attention to detail and quality of workmanship was really good. Nothing was too much trouble.

Rob Waddell, Olympic Gold Medalist,
Americas Cup Sailor



When Rob Waddell needed a new building for his farm, he chose Waikato Shed Company. Rob had specific requirements that had to be met, and it was clear a "standard shed" wasn't going to give him the flexibility, features or look he was after.

With the new shed located close to his home, it was important that it be aesthetically pleasing. The monopitch roof was custom made to precisely match the roof pitch of Rob's house, and horizontal cladding was used to create a consistent appearance with the house.

Careful planning and innovative design ensured the building wasn't just another steel shed, but a valuable addition to the property.

FARM • INDUSTRIAL • LIFESTYLE

WAIKATO SHED
COMPANY ✓

great sheds, done right!

Hamilton • Taupo

www.waikatosheds.co.nz

